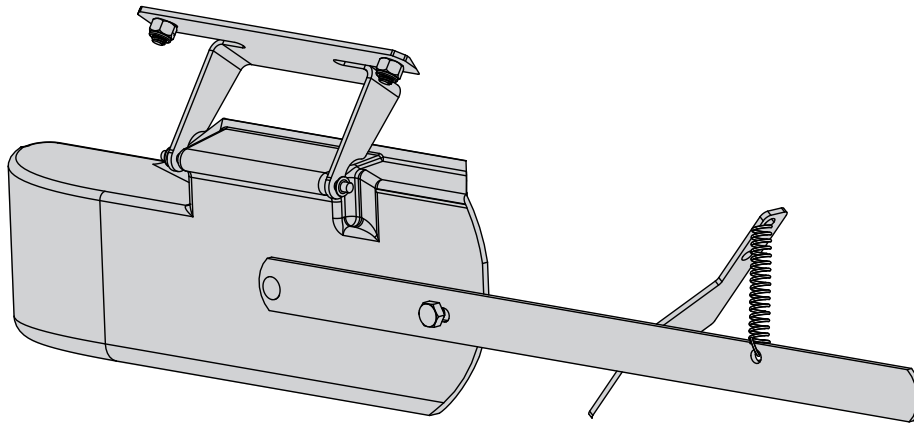




OPERATOR'S MANUAL

Model SPYSD-50 & SPYSD-80100
Side Deflectors

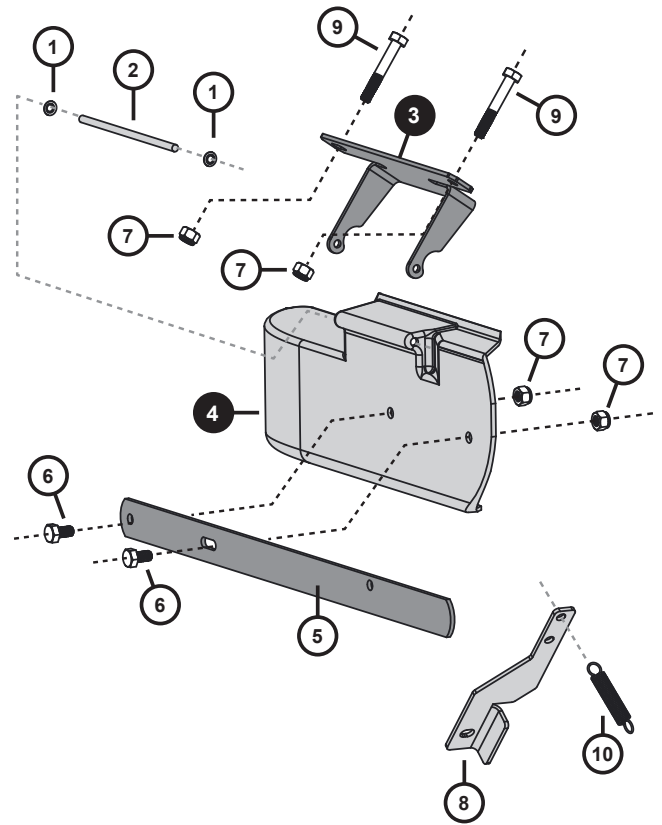
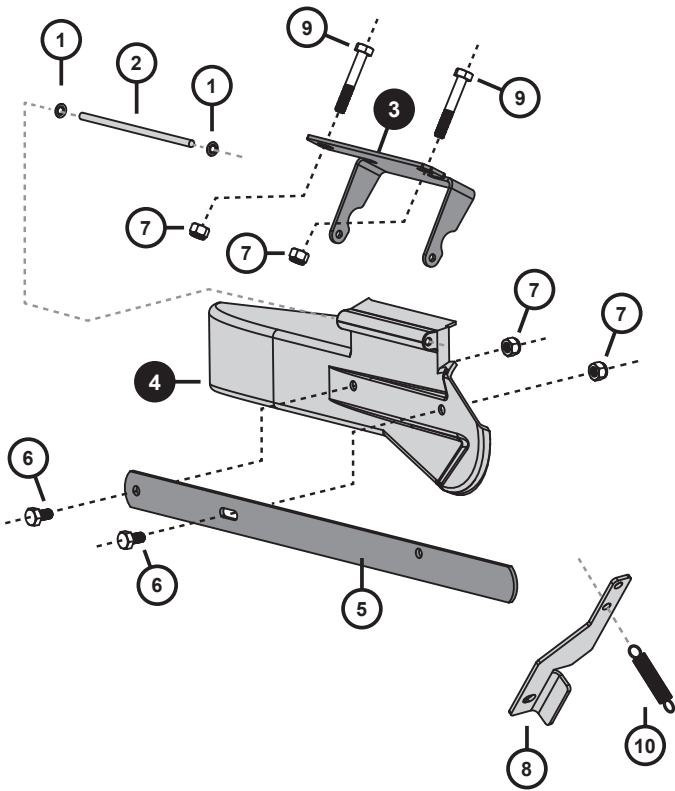


Spyker Spreaders
Contact Us at 800.972.6130

▲ IMPORTANT

**This manual contains information for the safety of persons and property.
Read it carefully before assembly and operation of the equipment!**

Parts Breakdown



SPYSD-50

Ref #	Part #	Description	Qty
1	1017034	Nut, Speed	4*
2	1017648	Rod, Hinge	1
3	1017653	Bracket, Deflector	1
4	1000684	Deflector Shield, Side	1
5	1017649	Bar, Kick	1
6	1004880	Bolt, HexHd 1/4x1/2 SS	2
7	1005198	Nut, NylonLock 1/4-20, SS	4
8	1018410	Bracket, Spring	1
9	2M0828SS	Bolt, HexHd 1/4x1-3/4 SS	2
10	1001651	Spring, SS.	1

SPYSD-80100

Ref #	Part #	Description	Qty
1	1017034	Nut, Speed	4*
2	1017648	Rod, Hinge	1
3	1017453	Bracket, Deflector	1
4	1001181	Deflector Shield, Side	1
5	1017649	Bar, Kick	1
6	1004880	Bolt, HexHd 1/4x1/2 SS	2
7	1005198	Nut, NylonLock 1/4-20, SS	4
8	1018410	Bracket, Spring	1
9	2M0828SS	Bolt, HexHd 1/4x1-3/4 SS	2
10	1001651	Spring, SS.	1

Parts 3 & 4 are the only variations between the two deflector kits.

Assembly steps on the back are illustrated with SPYSD-80100 parts, however, the steps are the same.

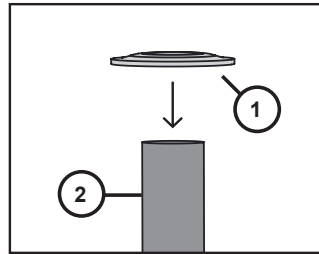
**Because they are incredibly small and easy to misplace, two (2) extra Speed Nuts have been added to each kit. (Item #1 / Part #1018411)*

Do not return product if any parts are missing. Please call: 1 (800) 972-6130

Assembly

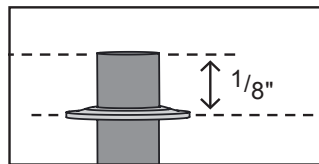
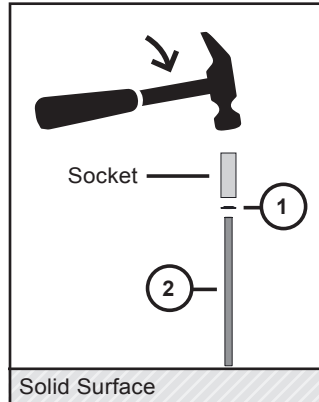
- Place end of the hinge rod (2) on a solid surface. Align a speed nut (1) on the end.

NOTE: Protruding washer lip (1) should be on the outside edge.

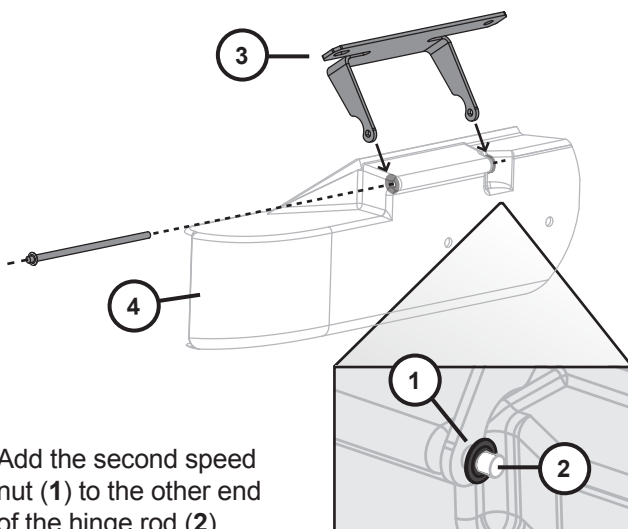


Using a small socket (such as 7/32") and a hammer, tap down on the speed nut (1) until it is 1/8" down the length of the hinge rod (2).

NOTE: This step may be easier if the hinge rod (2) is braced in place with a vice.



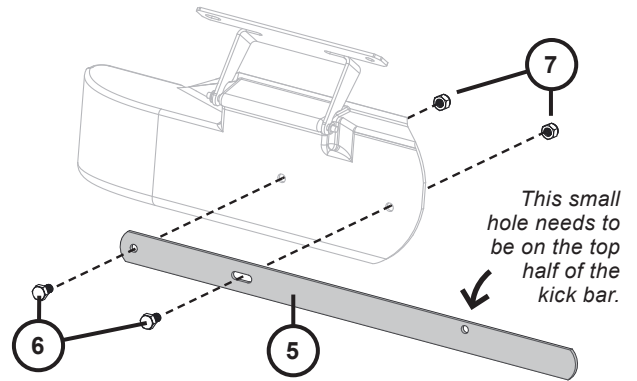
- Align the deflector bracket (3) and side shield (4) as illustrated below. Slide hinge rod assembly from Step 1 through the deflector bracket (3) and side shield (4).



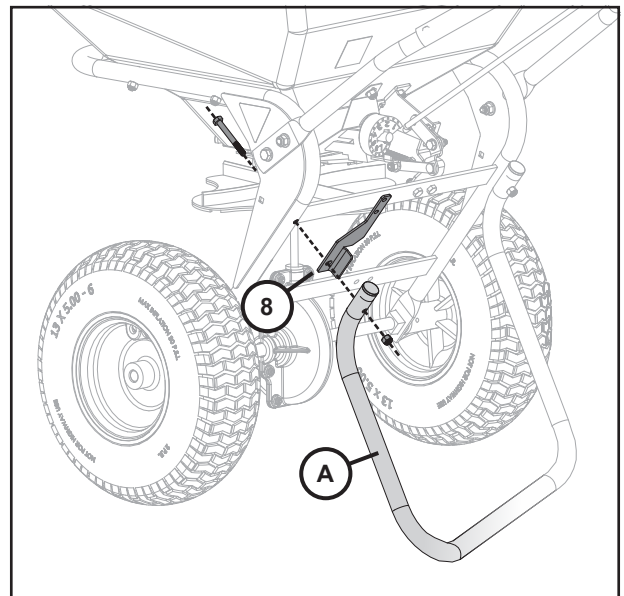
Add the second speed nut (1) to the other end of the hinge rod (2).

Place rod end on solid surface and use a hammer and socket to tap down the second speed nut.

- Fasten the kick bar (5) to the assembled side shield using two hex head bolts (6) and two lock nuts (7).



- Temporarily remove the bolt & nut on the left side of the kick-stand (A). Add the spring bracket (8) as illustrated below.



Assembly

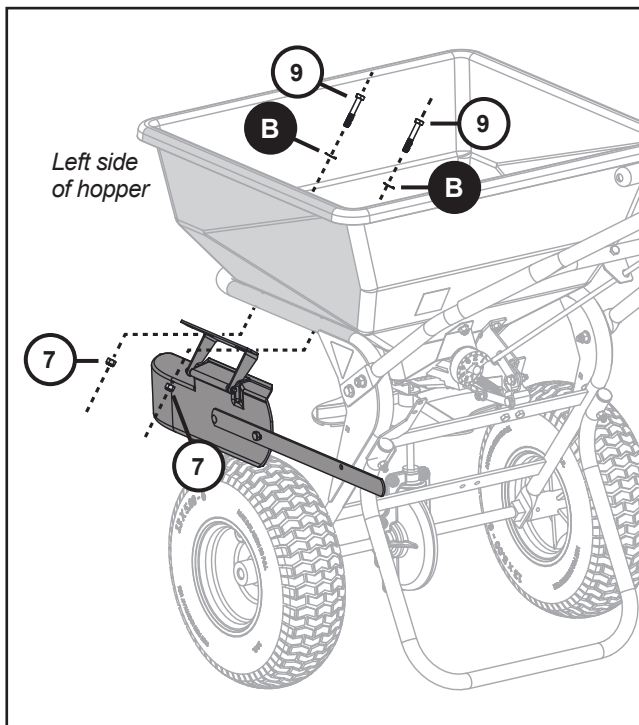
5. Remove existing nuts, washers and bolts holding the left side of the spreader hopper to the frame.

NOTE: Set aside the white washers (**B**) that you've removed from your spreader. (Discard the removed nuts and bolts).

Add the salvaged white washers (**B**) to each of the two new bolts (**9**).

Align the side deflector with the holes of the frame and run the two bolts (**9**) through the same location of the spreader, passing through the spreader frame and deflector assembly (as illustrated below).

Secure in place with two nylon lock nuts (**7**).



6. Loop the spring (**10**) through the spring bracket added on Step 4 and the kick bar added on Step 3.

